

Prisma 15 Surface horizontal



Centrifugal multistage pump for water supply

Applications

Pumping of clean water for domestic, industrial, agricultural and gardening purposes.
Silent.
Self-priming up to 2m.

Materials

Pump body and impellers in AISI 304.
Pump shaft in AISI 431.
Diffusers in technopolymer.
Suction and discharge in cast iron with cataphoresis coating.
Mechanical seal in aluminium-graphite.
Motor casing in aluminium.
O-rings in NBR/EPDM.

Equipment

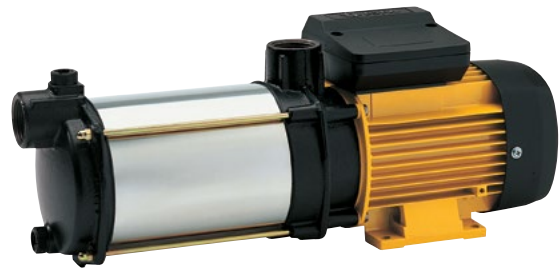
No cable.

Motor

Asynchronous 2 poles.
IPX5 protection.
Class F insulation.
Single phase motor with built-in thermal protection.
Continuous operation.

Limitations

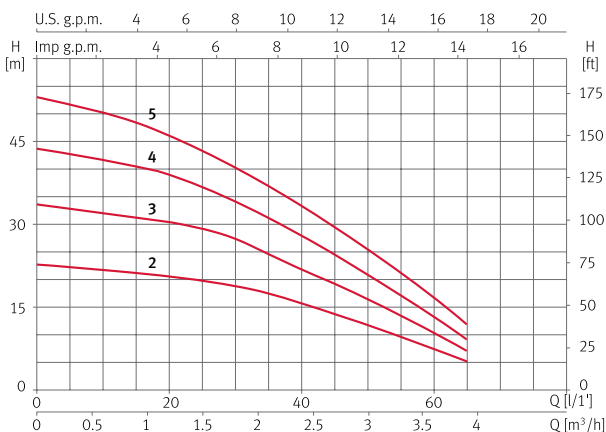
Maximum water temperature: 40° C.



Hydraulic performance table

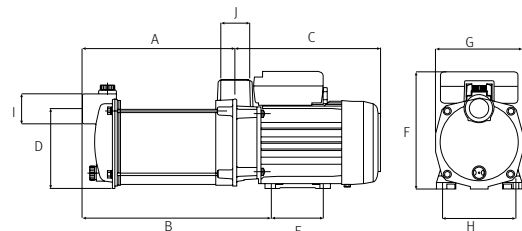
Model	I [A]			P1 [kW]		P2		c [μF]	l/min	10	20	30	35	40	50	60	65	Code	
	1~230V	3~230V	3~400V	1~	3~	[kW]	[HP]			m³/h	0,6	1,2	1,8	2,1	2,4	3,0	3,6	3,9	1~230V
Prisma 15 2	2	-	-	0,45	-	0,24	0,33	12	mwc	21	20	17	16	14	11	7	5	97134	-
Prisma 15 3	2,7	2,1	1,2	0,61	0,61	0,37	0,5	12		32	30	26	24	22	17	11	7	97141	97138
Prisma 15 4	3,5	2,3	1,3	0,79	0,79	0,55	0,75	12		43	39	35	32	27	22	14	9	97150	97148
Prisma 15 5	4,1	3,3	1,9	0,95	0,95	0,75	0,9	12		51	47	42	38	34	25	17	12	97159	97157

Performance curve at 2900 rpm



Dimension and weight

Model	A	B	C	D	E	F	G	H	I	J	Kg
Prisma 15 2	163	213	202	110	74	162	121	102	1"	1"	8,3
Prisma 15 3	187	237	202	110	74	162	121	102	1"	1"	9,2
Prisma 15 4	211	261	202	110	74	162	121	102	1"	1"	10
Prisma 15 5	235	285	202	110	74	162	121	102	1"	1"	11



Prisma 25 Surface horizontal



Centrifugal multistage pump for water supply

Applications

Pumping of clean water for domestic, industrial, agricultural and gardening purposes.
Silent.
Self-priming up to 2m.

Materials

Pump body and impellers in AISI 304.
Pump shaft in AISI 431.
Diffusers in technopolymer.
Suction and discharge in cast iron with cataphoresis coating.
Mechanical seal in aluminium-graphite.
Motor casing in aluminium.
O-rings in NBR/EPDM.

Equipment

No cable.

Motor

Asynchronous 2 poles.
IPX5 protection.
Class F insulation.
Single phase motor with built-in thermal protection.
Continuous operation.

Limitations

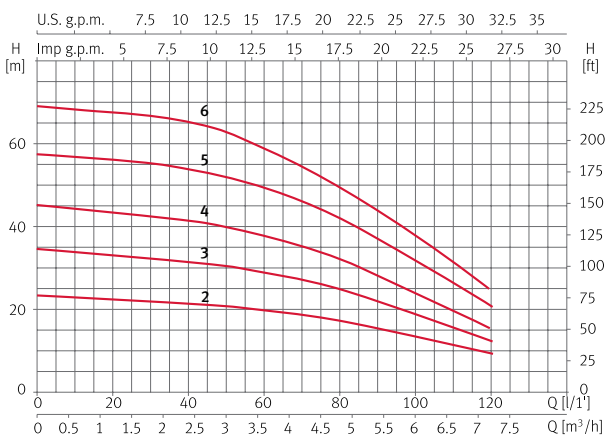
Maximum water temperature: 40° C.



Hydraulic performance table

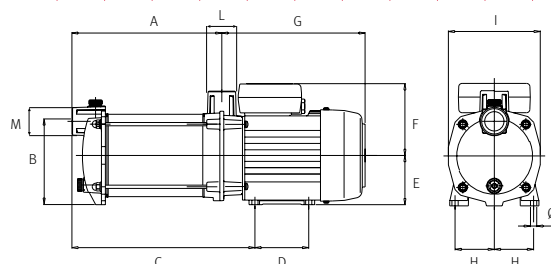
Model	I [A]			P1 [kW]		P2		c [μF]	l/min									Code	
	1~230V	3~230V	3~400V	1~	3~	[kW]	[HP]			15	30	45	60	75	90	105	120	1~230V	3~230V/400V
										m³/h	0,9	1,8	2,7	3,6	4,5	5,4	6,3	7,2	
Prisma 25 2	4,3	-	-	0,9	-	0,55	0,75	16	mwc	22	21	20	19	17	15	12	8	97170	-
Prisma 25 3	5,5	3,5	2	1,2	1	0,75	1	16		33	32	31	28	26	22	17	12	97178	97175
Prisma 25 4	6,8	4,3	2,5	1,5	1,4	0,9	1,2	16		43	42	40	37	33	28	22	15	97188	97185
Prisma 25 5	7,4	5,2	3	1,7	1,7	1,1	1,5	25		56	55	53	48	43	37	29	20	97196	97194
Prisma 25 6	9,8	6,7	3,9	2,2	2	1,5	2	30		72	68	65	58	50	40	32	24	97203	97202

Performance curve at 2900 rpm



Dimension and weight

Model	A	B	C	D	E	F	G	H	I	J	L/M	Kg
Prisma 25 2	176	127	226	82	75	110	218	59	138	8	1"	12,5
Prisma 25 3	202	127	253	82	75	110	218	59	138	8	1"	13,5
Prisma 25 4	229	127	279	82	75	110	218	59	138	8	1"	14,6
Prisma 25 5	255	127	328	82	90	122	241	59	138	8	1"	17,2
Prisma 25 6	281	142	304	-	90	122	286	69	154	10	1"	20



Prisma 35N Surface horizontal



Centrifugal multistage pump for water supply

Applications

Pumping of clean water for domestic, industrial, agricultural and gardening purposes.
Silent.
Self-priming up to 2m.

Materials

Pump body and impellers in AISI 304.
Pump shaft in AISI 431.
Diffusers in technopolymer.
Suction and discharge in cast iron with cataphoresis coating.
Mechanical seal in aluminium-graphite.
Motor casing in aluminium.
O-rings in NBR/EPDM.

Equipment

No cable.

Motor

Asynchronous 2 poles.
IPX5 protection.
Class F insulation.
Single phase motor with built-in thermal protection.
Continuous operation.

Limitations

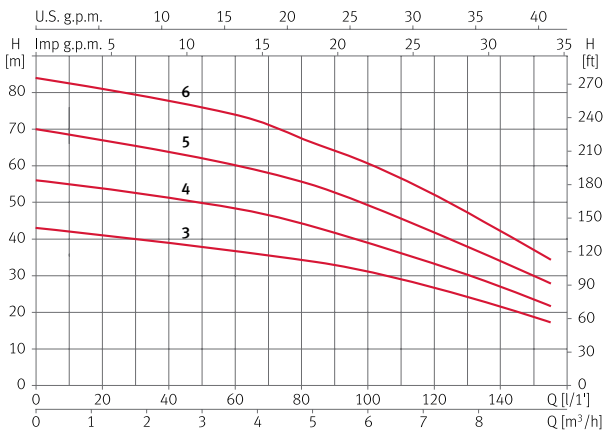
Maximum water temperature: 40° C.



Hydraulic performance table

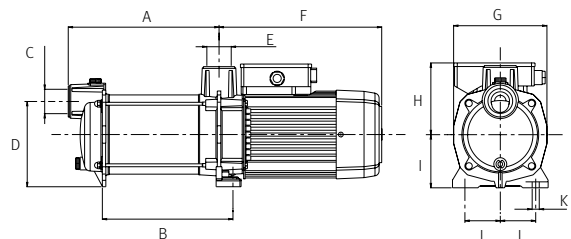
Model	I [A]			P1 [kW]		P2		c [μF]	l/ min m³/h	20	40	60	80	100	120	140	150	Code	
	1~230V	3~230V	3~400V	1~	3~	[kW]	[HP]			1,2	2,4	3,6	4,8	6,0	7,2	8,4	9,0	1~230V	3~230V/400V
	Prisma 35 3N	6,7	4,5	2,6	1,5	1,4	0,75			1	25	41	39	36	34	31	27	22	18
Prisma 35 4N	8,4	5,3	3,1	1,8	1,8	1,1	1,5	25	54	51	48	44	39	33	27	23	129344	129347	
Prisma 35 5N	10,2	6,9	4	2,3	2,2	1,5	2	30	68	64	60	55	49	41	34	30	129345	129348	
Prisma 35 6N	-	8,3	4,8	-	2,7	2,2	3	-	81	78	74	67	60	52	42	37	-	129349	

Performance curve at 2900 rpm



Dimension and weight

Model	A	B	C/E	D	F	G	H	I	J	K	Kg
Prisma 35 3N	221	187	1 1/4"	147	282	158	122	90	60	12	18,5
Prisma 35 4N	247	212	1 1/4"	147	282	158	122	90	60	12	20,5
Prisma 35 5N	271	236	1 1/4"	147	282	158	122	90	60	12	23,5
Prisma 35 6N	296	261	1 1/4"	147	282	158	122	90	60	12	23,7



Prisma 45N Surface horizontal



Centrifugal multistage pump for water supply

Applications

Pumping of clean water for domestic, industrial, agricultural and gardening purposes.
Silent.
Self-priming up to 2m.

Materials

Pump body and impellers in AISI 304.
Pump shaft in AISI 431.
Diffusers in technopolymer.
Suction and discharge in cast iron with cataphoresis coating.
Mechanical seal in aluminium-graphite.
Motor casing in aluminium.
O-rings in NBR/EPDM.

Equipment

No cable.

Motor

Asynchronous 2 poles.
IPX5 protection.
Class F insulation.
Single phase motor with built-in thermal protection.
Continuous operation.

Limitations

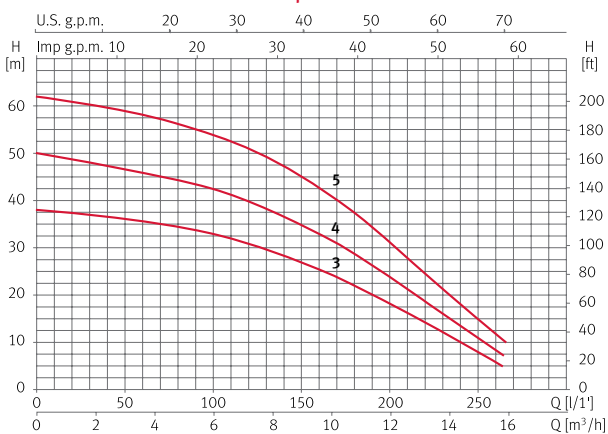
Maximum water temperature: 40° C.



Hydraulic performance table

Model	I [A]			P1 [kW]		P2		c [μF]	l/min	25	50	75	100	125	150	200	250	Code	
	1~230V	3~230V	3~400V	1~	3~	[kW]	[HP]			m³/h	1,5	3,0	4,5	6,0	7,5	9,0	12	15	1~230V
Prisma 45 3N	7,9	5,2	3	1,8	1,7	1,1	1,5	25	mwc	37	36	35	33	30	27	18	8	132082	132084
Prisma 45 4N	10	6,9	4	2,2	2,2	1,5	2	30		48	47	45	42	39	36	24	11	132083	132085
Prisma 45 5N	-	8,6	5	-	2,8	2,2	3	-		61	59	56	54	50	45	31	15	-	132086

Performance curve at 2900 rpm



Dimension and weight

Model	A	B	C	D	E	F	G	H	I	J	K	Kg
Prisma 45 3N	246	212	1 1/2"	147	1 1/4"	282	158	128	90	60	12	22,6
Prisma 45 4N	277	242	1 1/2"	147	1 1/4"	282	158	128	90	60	12	23,7
Prisma 45 5N	307	273	1 1/2"	147	1 1/4"	282	158	128	90	60	12	25,3

